

## CUSTOMER INFORMATION

Customer name \_\_\_\_\_ Date \_\_\_\_\_ Shipping Address \_\_\_\_\_  
 Phone # \_\_\_\_\_  
 Email \_\_\_\_\_

- SUIT TYPE**     ONE PIECE     TWO PIECE     JACKET  
**BODY TYPE**     SLIM     AVERAGE     STOCKY



The Racer's Brand of Safety Gear and Apparel

- PREMIUM 1-LAYER SFI 3.2A/1**  
 295 \*g/m<sup>2</sup> FR Cotton / \*TPP 10
- PREMIUM 2 LAYER SFI 3.2A/5**  
 150 \*g/m<sup>2</sup> 100% Nomex Outer Layer  
 180 \*g/m<sup>2</sup> 100% Nomex Inner Layer  
 330 \*g/m<sup>2</sup> Total Suit Weight / \*TPP 21.6

### Standard Suit Options Included In Price - ALL INCLUSIVE

#### SFI 1 Auto Racing Suit

##### Unlimited Embroidery

- Custom Sizing
- 360 Degree Arm Gussets
- Lower Back Stretch Panel
- Crotch Stretch Panels
- Choice of Leg Design
- Choice of Collar Design
- Standard Cotton FR Proban Outer Shell

#### SFI 5 Auto Racing Suit

##### Unlimited Embroidery

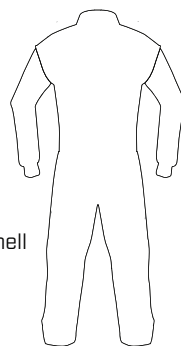
- Custom Sizing
- 360 Degree Arm Gussets
- Lower Back Stretch Panel
- Crotch Stretch Panels
- Premium Knit Nomex Inner Lining
- Choice of Quilting Stitch Color
- Choice of Leg Design (Boot Cut or Cuffed)
- Standard Meta Para - Aramid Nomex Outer Shell
- Fluorescent colors included in price

**\*TPP Rating-** Divide this number by two to determine the number of seconds before a second degree burn occurs

**\*g/m<sup>2</sup>** Grams per square meter refers to the weight of the suit

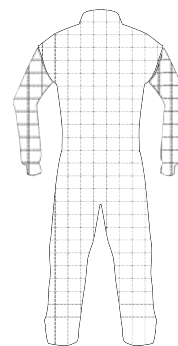
### Stitching Styles

Stitching color will match the main color of the suit unless otherwise specified.

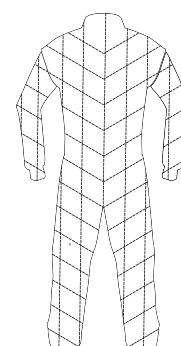


None

(Single Layer Suit Only)



Box



Diagonal

### Additional Add Ons

- STRETCH PANELS (Arm Gusset, Back and Crotch panels are included)**     Side Stretch Panels **(+\$50)**
- Arm Restraint D Rings **(+\$50)** [2 D rings per arm]     Raceceiver Pocket **(+\$25)**     Passport Pocket **(+\$25)**
- SAFETY X INNER LINER **(+\$100)** ADDS +70 GSM IN WEIGHT / ADDS TPP +7.5 [Upgrade on 2 layer suits only]

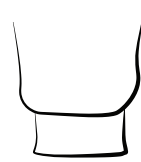
### Legging Styles



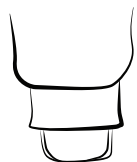
Boot Cut



Boot Cut w/Hooves



Euro Cut



Euro Cut w/Elastic

### Collar Styles



Large w/ Velcro



Banded

Banded w/Velcro



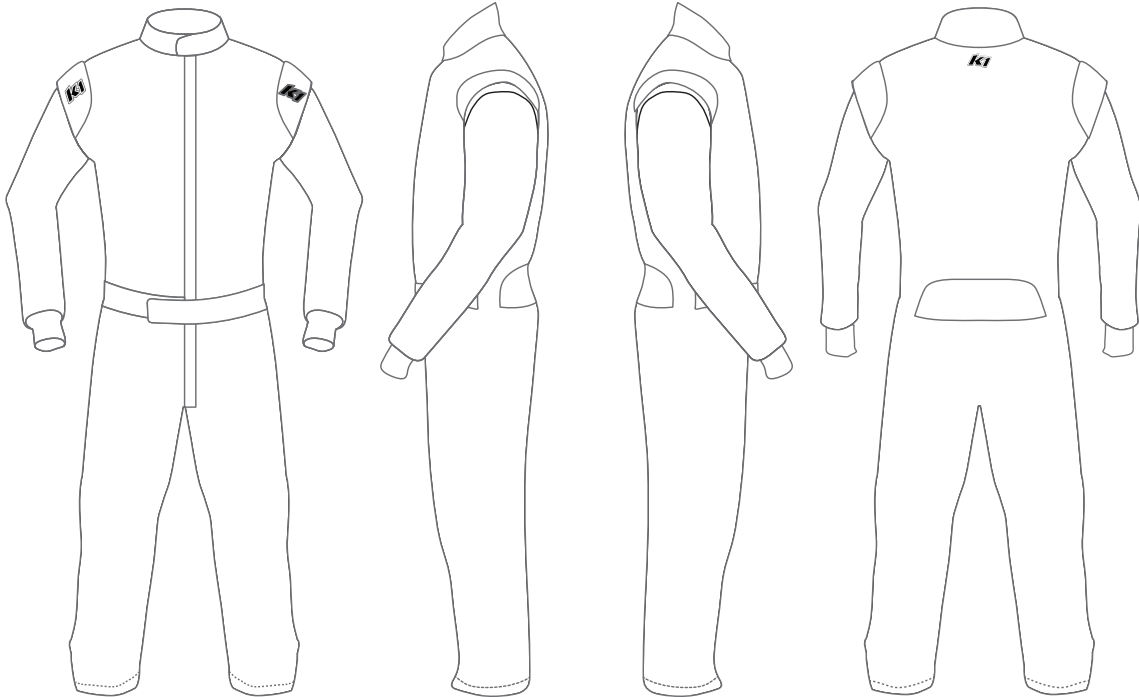
Tapered

Tapered w/Velcro

## Fabric Colors

COLORS	PIPING COLOR	ADDITIONAL INFO
Color 1: _____	Collar: _____	Name on belt _____
Color 2: _____	Epaulets: _____	Flag on belt _____
Color 3: _____	Belt: _____	Wrist cuff color _____
Color 4: _____		Collar color _____
Color 5: _____		

## Logo Placement



Write the name of the sponsors needed in order or appearance on the chest/arm/etc.

FRONT UPPER LEFT	LEFT SIDE ARM	RIGHT SIDE ARM	BACK
1. _____	1. _____	1. _____	1. _____
2. _____	2. _____	2. _____	2. _____
3. _____	3. _____	3. _____	3. _____
4. _____	4. _____	4. _____	4. _____
5. _____	5. _____	5. _____	5. _____
6. _____	6. _____	6. _____	6. _____
FRONT UPPER RIGHT	7. _____	7. _____	
1. _____	8. _____	8. _____	
2. _____	9. _____	9. _____	
3. _____	LEFT SIDE FOREARM	RIGHT SIDE FOREARM	
4. _____	1. _____	1. _____	
5. _____	LEFT SIDE LEG	RIGHT SIDE LEG	
6. _____	1. _____	1. _____	
FRONT MAIN	2. _____	2. _____	
1. _____			
2. _____			
3. _____			



# NOMEX COLORS

## Premium Nomex

<b>BLACK</b> C22761 BLACK c	<b>FLUORESCENT PINK</b> C34985 813c
<b>WHITE</b> C0000 WHITE	<b>FLUORESCENT RED</b> C93930 Red 032c
<b>SILVER</b> C22877 COOL GREY 2c	<b>FLUORESCENT YELLOW</b> C63031 809c
<b>GREY</b> C23015 430c	<b>FLUORESCENT BLUE</b> C34861 801c
<b>DARK GREY</b> C23181 COOL GREY 10c	<b>FLUORESCENT GREEN</b> C53988 376c
<b>LIGHT BLUE</b> C34538 299c	<b>FLUORESCENT ORANGE</b> C75757 Orange 021c
<b>ROYAL BLUE</b> C34380 2945c	<b>PURPLE</b> C43459 269c
<b>PLATINUM BLUE</b> C34381 287c	<b>PINK</b> C43460 237c
<b>DARK NAVY BLUE</b> C34358 295c	<b>GREEN</b> C53870 361c
<b>RED</b> C93109 187c	<b>YELLOW</b> C62981 Yellow c
<b>GOLD</b> C63077 721c	<b>ORANGE</b> C75722 165c
<b>TEAL</b> C53810 3262c	<b>LIGHT BLUE</b> C34633 299c
<b>AIR MILLION GREEN</b> C53719 349c	<b>CARBON FIBER</b> Z2110 CARBON FIBER
	<b>MUSTARD YELLOW</b> C62754 123c

## FR Cotton

<b>BLACK</b> BLACK
<b>WHITE</b> WHITE
<b>PINK</b> Hexachrome Magenta
<b>RED</b> 186c
<b>YELLOW</b> Yellow c
<b>ORANGE</b> Orange 021c
<b>GREEN</b> Green C
<b>ROYAL BLUE</b> 288c
<b>LIGHT GREY</b> Cool Gray 8c
<b>GREY</b> Cool Gray 10c
<b>DARK GREY</b> COOL GREY 11c
<b>PURPLE</b> 269c